

Wireless Transmitter and Receiver

- Receiver Operates On 12 Or 24 Volts AC Or DC, Maximum Current 50 MA • SPDT Relay With 1A @ 30 VDC Or 120 VAC
- Receiver Has Five Second Momentary Output. User Programmable Option For Latching Output
- 433.92 MHZ Working Frequency
- Rolling Code, More Than One Billion Code Combinations
- Receiver Will Accept Up To Thirty Transmitters
- Receiver Has A Small Size 2-1/2" L X 1-1/4" W X 3/4" D With An Attractive Off White Case
- Receiver Screw Terminals Are Hidden By Cover
- BI-COLOR LED On Receiver Indicate Condition Of Relay
- Receiver Has A 12" Long Thin Wire Antenna For Maximum Range Of 300 Feet
- Two transmitters are supplied with each receiver
- One transmitter has a keychain; additional transmitters are available (Part Number ANRT-1T, \$31.00)

Part #	Part #	Price
ANRT-1	RT-1 Kit includes one channel receiver & two transmitters w/ mount & keychain	\$107.00
ANRT-3	Rt-3 Kit includes three channel receivers, one transmitter with mount and keychain	\$168.00
ANRT-1T	Transmitter for RT-1 w/ key chain & holder	\$33.00



Mortise Cylinder Key Switch



1-3/4" Narrow, Stainless Steel Wall Plate, 4A, SPDT Momentary Action Switch

ANMCK-1 \$102.00



Single Gang, Stainless Steel Wall Plate 4A, SPDT Momentary Action Switch

ANMCK-4 \$107.00

Wave-to-Exit

Detection range up to 4"

Time delay settable for 1 to 35 seconds

SPDT relay rated 2A at 30 VDC/VAC



ANNTS-1
Single Gang

\$112.00

Vandal Resistant Push Plates

Machined from solid aluminum with engraved text and anodized finish

Tamper resistant mounting Designed for use in high traffic areas

Narrow plate is just 1.875" wide and is suitable for mullion mounting

T-Style and Single Gauge plates mount on a standard single gang electrical box UL 294 (6th edition) listed NFPA-101

SPDT Momentary Action Switch

Engraved "ADA PUSH TO OPEN" with white fill.

Contacts Rated .5A @ 125VDC

ANPS1-443 \$234.00



4.5"

3"

Electric Strikes

- For use with cylindrical locksets
- Non-handed – horizontally adjustable
- Factory tested to 500,000 cycles
- Accepts locksets with a latch up to 5/8" throw without a deadbolt

- ANSI/BHMA Grade 2
- Strike Body Depth 1-1/2"

\$180.00



Specify Voltage

ANAES-300-12KIT
ANAES-300-24KIT

Exit Motion Sensor

- UL 294 & ULC-S319 Listed as an access control device
- operates on 12 or 24 vac or vdc, auto sensing
- double pole-double throw relay with 2a contacts

- Adjustable time delay from 1 to 60 seconds
- built-in buzzer, can be silenced if required

ANSREX-100 \$177.00



Pneumatic

Pneumatic time delay

One Normally-Open, & One Normally-Closed contact pair

Contacts rated 2A @ 12-28VDC

Time Range: 2 to 30 seconds

ANPS5-111 \$426.00



4.5"

3"

Mag Locks

All Mag Locks:

- Operates on 12 or 24 VDC, switch selectable
- Operating temperature: +14 to +131F [-10 to +55C]

- Built-in Arc Suppression
- Instant Release, No Hysteresis
- Non-Aluminum Parts Are Plated To Resist Corrosion
- Ideal For Cabinets And Showcases
- Self Drilling Tec Screws
- Limited Lifetime Warranty

320S

- 300 lbs holding force
- Magnet size: 6-11/16" L x 1-1/2" H x 1-3/16" W
- Armature size: 5-1/2" L x 1-1/4" H x 7/16" W
- Low current draw: 250 mA at 12 VDC, 130 mA at 24 VDC



AN320S \$162.00

600S UL & ULC

- 600 Lbs Holding Force
- Magnet Size: 9-7/8" L X 1-11/16" H X 1" W
- Armature Size: 7-1/4" L X 1-7/16" H X 5/8" W
- Low Current Draw: 400 mA At 12 VDC, 200 mA At 24 VDC



AN600S \$192.00

Double Magnet AN600D \$320.00

1200S UL & ULC

- 1200 lbs holding force
- Magnet size: 10-1/2" L x 2-7/8" H x 1-1/2" W
- Armature size: 7-3/8" L x 2-3/8" H x 9/16" W
- Low current draw: 400 mA at 12 VDC, 200 mA at 24 VDC



AN1200S \$238.00

1200D

- 1200 Pound Double Door Magnetic Lock W/ Indicating LED
- Bond Sensor & Door Status Sensor
- 12 or 12 VDC, UL & ULC



AN1200D \$525.00

1200LB

- 1200 lbs holding force
- Magnet size: 10-1/2" L x 2-7/8" H x 1-1/2" W
- Armature size: 7-3/8" L x 2-3/8" H x 9/16" W
- Low current draw: 400 mA at 12 VDC, 200 mA at 24 VDC
- Sensors have SPDT 3A relay contacts



AN1200LB \$381.00

600LB

- 600 lbs holding force
- Magnet size: 9-7/8" L x 1-11/16" H x 1" W
- Armature size: 7-1/4" L x 1-1/2" H x 1/2" W



AN600LB \$297.00

W/ Indicating LED, Bond Sensor & Door Status Sensor

Door Loops

Stainless Steel, 18" with White & Brown Plastic End Caps

ANDL-1 \$22.00



1/4" I.D.

Stainless Steel, 18" with Die Cast End Caps

ANDL-2 \$29.00



3/8" I.D.

Push-To-Exit Buttons

UL 2" Square Green Illuminated Push Button, Single Gang, Stainless Steel

Single Position Double Throw S.P.D.T

Double Position Double Throw D.P.D.T



ANTS2 \$62.00

ANTS2-2 \$84.00

Request To Exit Station With Built In Adjustable 2-45 Second Timer

UL 2" Square Green Illuminated Push Button, Single Gang, Stainless Steel, S.P.D.T., 1A Contacts 12/24V AC/DC



ANTS-2T \$159.00

Pneumatic Time Delay With 1/2" Mushroom Button One N/O & One N/C Contact, 1-1/2" Dia. Green Push Button, Single Gang, Stainless Steel Plate. Time Range Between 2-60 Seconds



ANTS14 \$373.00

Under Counter/Desk Door Release With Momentary Push Button

S.P.D.T. 1"H x 1.5"W x 2"L



ANTS18 \$43.00

Filler Plates & Z Brackets

ANAM3300

1/2" Spacer For 600 Series



ANAM6300

1/2" Spacer For 1200 Series

\$35.00

ANAM6361

Spacer For 600 & 1200 Series

10-1/2"x3/4"x1/2"

\$28.00

ANAM3370 \$104.00

3 Piece Z Bracket For All 600 Series

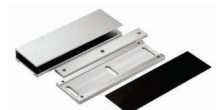


ANAM6370 \$166.00

3 Piece Z Bracket For All 1200 Series

ANAM6375 (Double Mag) \$275.00

Glass Door Holder



ANGDH \$68.00