

EH Series Magnetic Door Holders

Designed to hold doors open and release the door by remote switch or fire life safety command center activation.



Voltage: 12/24VAC/DC
Finish: Chrome Powder Coat

Part #	Mount	Price
SXEH101224A	Flush	\$145.00
SXEH201224A	Semi-Flush	\$112.00
SXEH301224A	Surface	\$162.00

Power Transfer Loop

Provide a means of running wires from the frame to doors equipped with electric locks and exit devices.



Power Transfer Loop with Black End Caps
18" Long, 1/4" I.D.
SXPT-2U
\$22.00

Electric Power Transfer Hinges

Provide a concealed and vandal resistant method for running wires from the frame to doors equipped with electric locks and exit devices.



626 Dull Chrome
4-1/2" x 4-1/2"

Part #	Description	Price
SXPTH-4Q	1 Amp @ 12/24V per pair, (4x) 26 AWG	\$164.00
SXPTH-10Q	1 Amp @ 12/24V per pair, (10x) 28 AWG	\$217.00
SXPTH-10QDPS	Concealed Door Position Switch SPDT, 250mA @ 30VDC	\$217.00
SXPTH-2+4Q	1-pair 16 Amp Inrush, 4 Amp Continuous; 2-Pair 1 Amp @ 12/24V, (2x) 18 AWG + (4x) 28 AWG	\$195.00

Electric Power Transfer Devices

Provides a concealed and secure means of transferring electric lock and exit device power and signal wires from the frame to the door.

SXPTM-2AL **\$383.00**

Two conductor power transfer device, aluminum powder coat

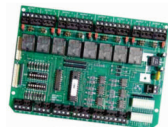
SXPTM-10AL **\$383.00**

Ten conductor power transfer device, aluminum powder coat



Universal Controller

For 2 doors. field select td, LR, TD/LF, mantrap a, b, c interlock. two fused spdt outputs, 5 amp @ 30vdc. two SPDT outputs, 5 amp @ 30vdc. two inputs per station, four auxiliary inputs.



SXUR2-4 **\$244.00**

Desk Switch

MO, SPDT Push Switch, 10 Amp @ 30VAC/DC



Mounted on the underside of a desk, these switch assemblies enable the remote control of doors equipped with electric locks and access controls. **SX15-2** **\$84.00**

Egress Sensor

Specifically designed for request-to-exit applications. It has an adjustable 1-60 sec time delay. The coverage field is internally pointable. When angled 14° down, coverage may be 5 x 6 ft at 7 ft high to 10 x 12 ft at 15 feet high.



\$243.00
SXMD-31DOW White
SXMD-31DB Black

Quiet Duo™ LR100

700mA Dual Latch Retraction/Dogging Kit



For use with 3hr fire rated and non-fire rated mechanical exit devices.

Part #	Exit Device	Price	
SXLR100ARK*	Adams Rite	\$730.00	
SXLR100AWK	Arrow		
SXLR100CRK	Corbin-Russwin		
SXLR100DAK	Dorma		
SXLR100DMK	Dor-O-Matic		
SXLR100FAK	Falcon		
SXLR100FRK	Falcon		
SXLR100MDK	Marks		
SXLR100PDK	PHI		
SXLR100SGK	Sargent		
SXLR100VDK	Von Duprin		
SXLR100VDK-EM	Von Duprin		\$784.00
SXLR100VDK-22	Von Duprin		\$730.00
SXLR100YDK	Yale		

Ask customer service to confirm the exact model that each kit will work for.

Exit Switches

2" Illuminated Exit Switches 420 Series



SX423MU \$153.00	Integrated Fixed 30 Sec. Timer	SX422U-630 \$77.00	Momentary SPDT
SX423U \$150.00	Integrated Electronic Timer	SX474U \$82.00	2-SPDT Touchless Exit Switch

Emergency Door Release

Blue Break Glass Station 2-SPDT 10 Amp Contacts With Built-In Local Alarm (12/24V)



SX491
\$200.00

Exit Bars

Designed to release electromagnetic door locks for uninhibited egress.



MSB560 Mechanical Egress Bar

Part #	Width	Finish	Price
SXMSB550V	36"	Aluminum	\$236.00
SXMSB550Y	36"	Black	\$244.00
SXMSB5502V*	36"	Aluminum	\$268.00

*2nd Mech. Switch For Dual-failsafe Redundant Oper.

PSB560 Sure Exit® Egress Bar

SXPSB560V	36"	Aluminum	\$381.00
SXPSB560Y	36"	Black	

Magnetic Locks

- Modular design
- Modular upgrade kits
- Field upgradeable without removing from the frame



Part #	Description	Price
SX1511SNAKV	1650 lb Key Switch	\$1248.00
SX1511SNDKV	1650 lb Key Switch	
SX1511-628	1650 lb Aluminum	\$499.00
SX1511-X	1650 lb Dark Bronze	\$588.00
SX1571-V-628	1200 lb Aluminum	\$457.00
SX1571-X	1200 lb Dark Bronze	\$546.00
SX1581-V	650 lb Aluminum	\$381.00
SX1581-X	650 lb Dark Bronze	\$470.00

Top Jamb Mounting Brackets

SXTJ1V	Kit for 1200lb and 1650lb Locks	\$129.00
SXTJ81V	Kit for 650lb Locks	\$129.00

Narrow Line Magnetic Lock

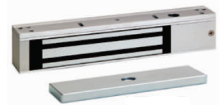
1200lbs Holding Force w/Dual 12/24VDC Input



SX350V **\$417.00**

Excel™ Series Magnetic Lock

Traffic Control, Air-Locks & Communicating Bathrooms, 600 lb/272 kg Holding Force



SXE600-628
\$239.00

Electra Pro™ Locks

For the access control of openings in commercial, industrial and institutional facilities



E = Eclipse E5 = Eclipse, I-Core Prep
G = Galaxy G5 = Galaxy, I-Core Prep

Part #	Description	Price
SXZ7250-EQ-628	Failsafe	\$457.00
SXZ7250-E5Q	Failsafe	\$485.00
SXZ7250-G5Q	Failsafe	\$485.00
SXZ7252-EQ-628	Failsecure	\$457.00
SXZ7252-E5Q	Failsecure	\$485.00
SXZ7252-G5Q	Failsecure	\$485.00