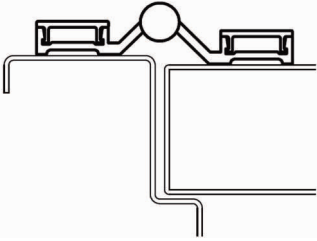
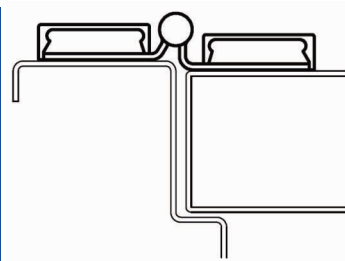
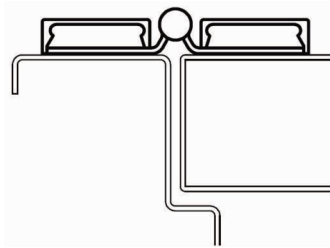
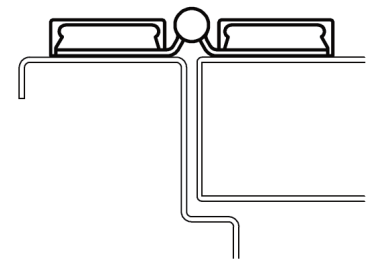
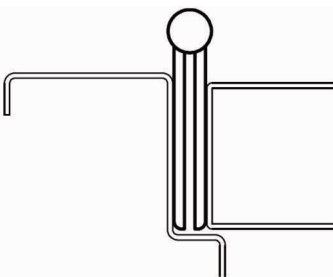
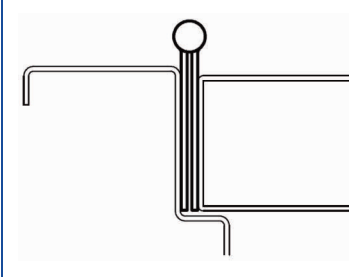
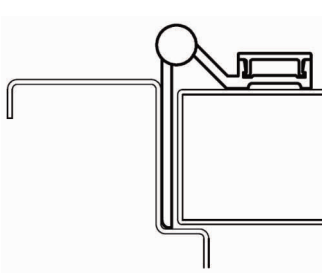
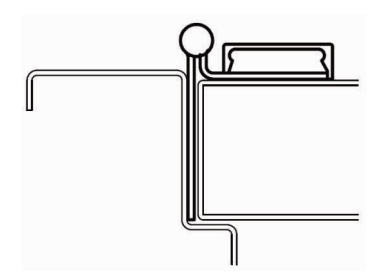


Continuous Hinges
Full Surface 1/8" Offset, Pin And Barrel

FS101

**FS201
FS301**
Full Surface Flush

FS102

**FS202
FS302**

Part #	Length	Material	Finish	Price
MRFS101-7-AL	7'	Aluminum	Aluminum	\$660.00
MRFS101-7-BRZ	7'	Aluminum	Duranodic	\$855.00
MRFS101-8-AL	8'	Aluminum	Aluminum	\$766.00
MRFS101-8-BRZ	8'	Aluminum	Duranodic	\$974.00
MRFS201-7-P	7'	Carbon Steel	Prime Coat	\$561.00
MRFS301-7-SS	7'	Stainless	Stainless	\$799.00

Part #	Length	Material	Finish	Price
MRFS102-7-AL	7'	Aluminum	Aluminum	\$660.00
MRFS102-7-BRZ	7'	Aluminum	Duranodic	\$855.00
MRFS102-8-AL	8'	Aluminum	Aluminum	\$766.00
MRFS102-8-BRZ	8'	Aluminum	Duranodic	\$974.00
MRFS202-7-P	7'	Carbon Steel	Prime Coat	\$561.00
MRFS302-7-SS	7'	Stainless	Stainless	\$799.00

Edge Mount

FM100

**FM200
FM300**
Half Surface

HS103

**HS203
HS303**

Part #	Length	Material	Finish	Price
MRFM100-7-AL	7'	Aluminum	Aluminum	\$560.00
MRFM100-8-AL	8'	Aluminum	Aluminum	\$616.00
MRFM100-8-BRZ	8'	Aluminum	Duranodic	\$770.00
MRFM200-7-P	7'	Carbon Steel	Prime Coat	\$441.00
MRFM300-7-SS	7'	Stainless	Stainless	\$544.00

Part #	Length	Material	Finish	Price
MRHS103-7-AL	7'	Aluminum	Aluminum	\$643.00
MRHS103-7-BRZ	7'	Aluminum	Duranodic	\$778.00
MRHS203-7-P	7'	Carbon Steel	Prime Coat	\$503.00
MRHS303-7-SS	7'	Stainless	Stainless	\$748.00